



## ZENITH

Next-Gen

MUSIC SERVER | STREAMER

## ZEN

Next-Gen

MUSIC SERVER | STREAMER



Quick Start Guide

Thank you for buying our **ZEN Next-Gen / ZENith Next-Gen** and welcome to the Innuos family!

This **Quick Start Guide** will show you how to get started with your new music server/streamer. For further details, troubleshooting and help with advanced setups, visit our support page at <https://community.innuos.com/>.

At **Innuos**, we appreciate your feedback. Once you download and start using our **Sense 3** to play your music, we encourage you to register at our **Feedback Zone** at <https://feedback.innuos.com/> where you can help shape future software development by providing your thoughts and feature requests. You can also join us on social media to keep informed about events, new features and products here:



instagram.com/innuos



twitter.com/innuos



youtube.com/innuos



facebook.com/innuos

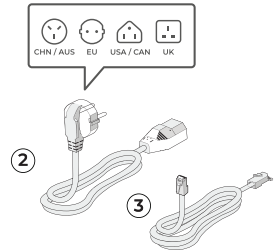
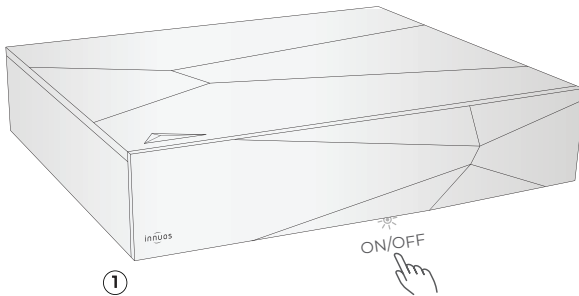
Enjoy the music,

**The Innuos Team**

To get started download the Innuos **Sense 3** at the following stores:



You can also access your Innuos **Sense 3** using a modern browser at the following address: [my.innuos.com](https://my.innuos.com)



## Box Contents

1. Innuos **ZEN Next-Gen / ZENith Next-Gen**
2. Mains Power Cable
3. 2m Ethernet Cable

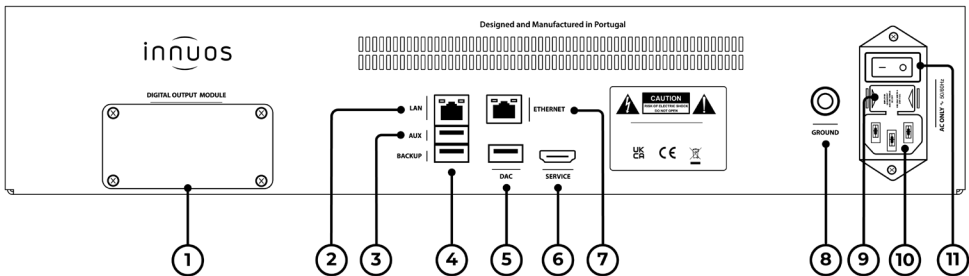
## Turning the **ZEN Next-Gen / ZENith Next-Gen** ON/OFF

The **ON/OFF** button is located under the bottom edge at the centre of the front panel.

To turn off the **ZEN Next-Gen / ZENith Next-Gen**, press the **ON/OFF** button once and wait 1 - 2 seconds to shutdown. Do not hold **ON/OFF** button down.



## ZEN Next-Gen / ZENith Next-Gen Rear Panel Diagram



1. Digital Output Module (Optional)
2. Network Input (LAN)
3. Auxiliary USB Port  
(Imports/CD Ripper/USB Drive)
4. USB Backup Port
5. USB DAC Output

6. HDMI Output (Service only)
7. Network Output
8. Chassis Ground Port
9. Fuse Chamber
10. AC Inlet
11. On/Off Rocker Switch